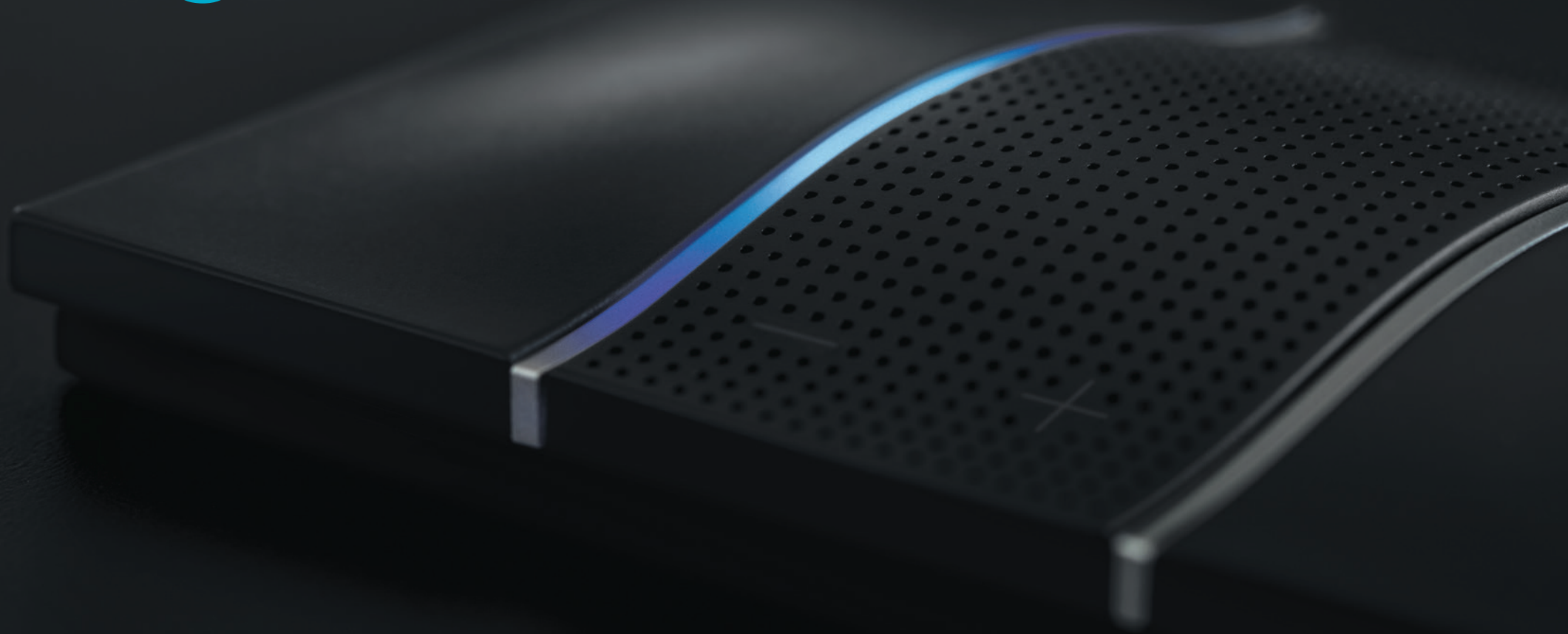


LIVING 
now



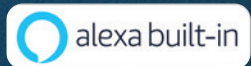
bticino

LIVING 
now





VOICE CONTROL
ALEXA NATIVE AT HOME



LIVING 
now



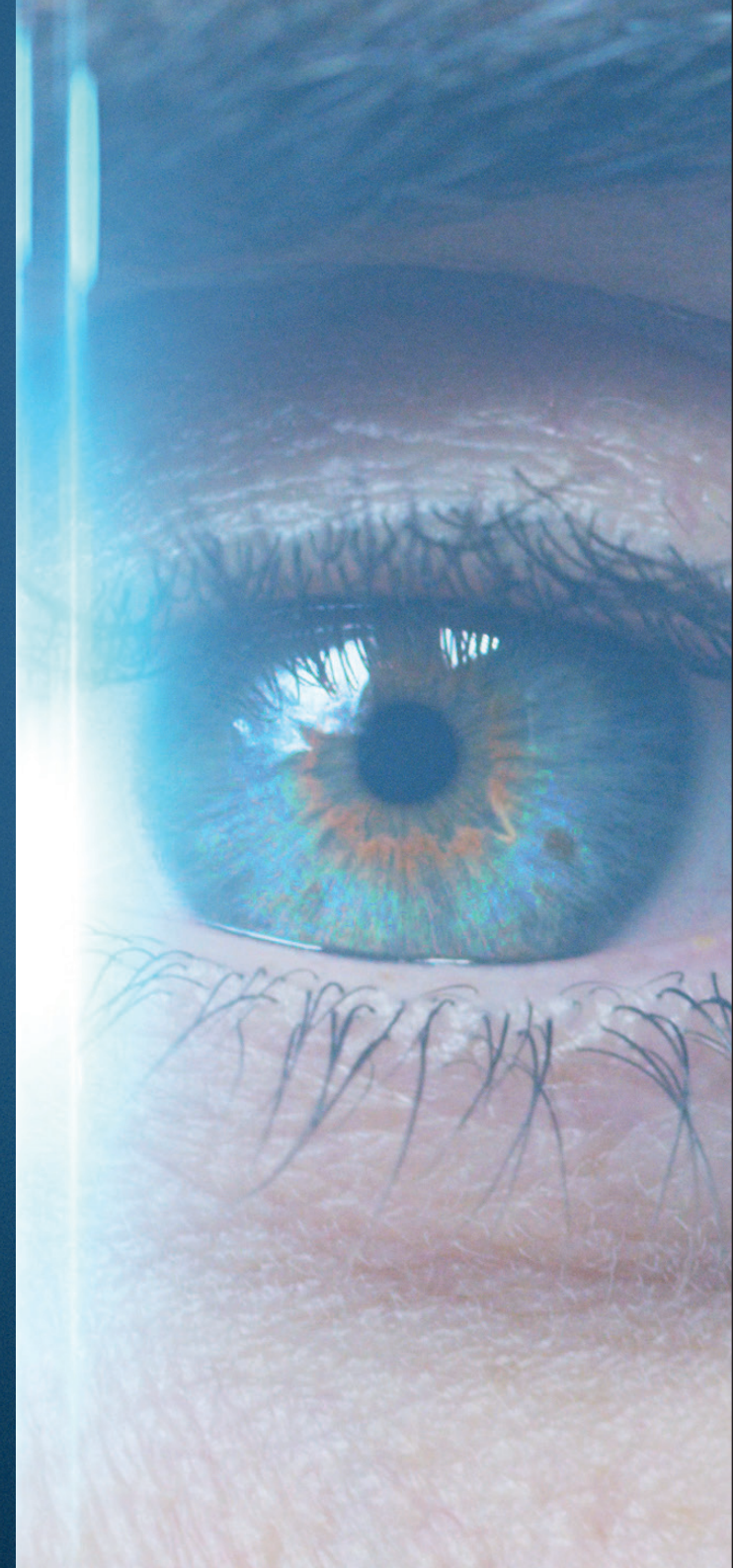


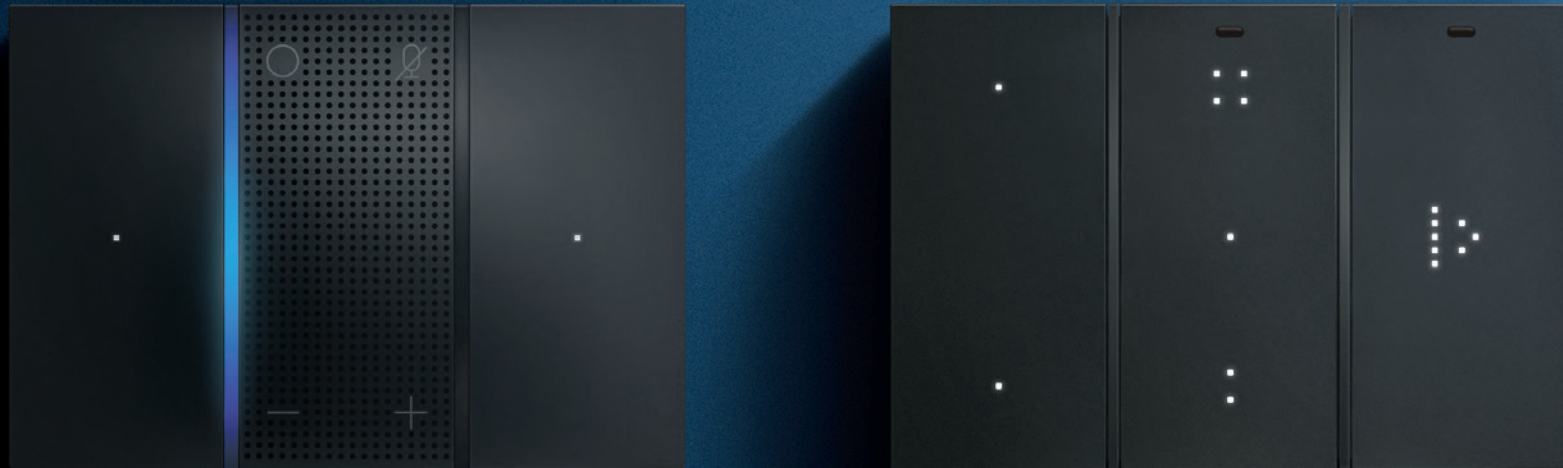
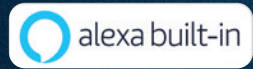
DIGITAL CONTROL

TOUCH CONTROL CUSTOMISABLE BY THE USER

THE NEW LOOK OF HOME AUTOMATION

LIVING 
now

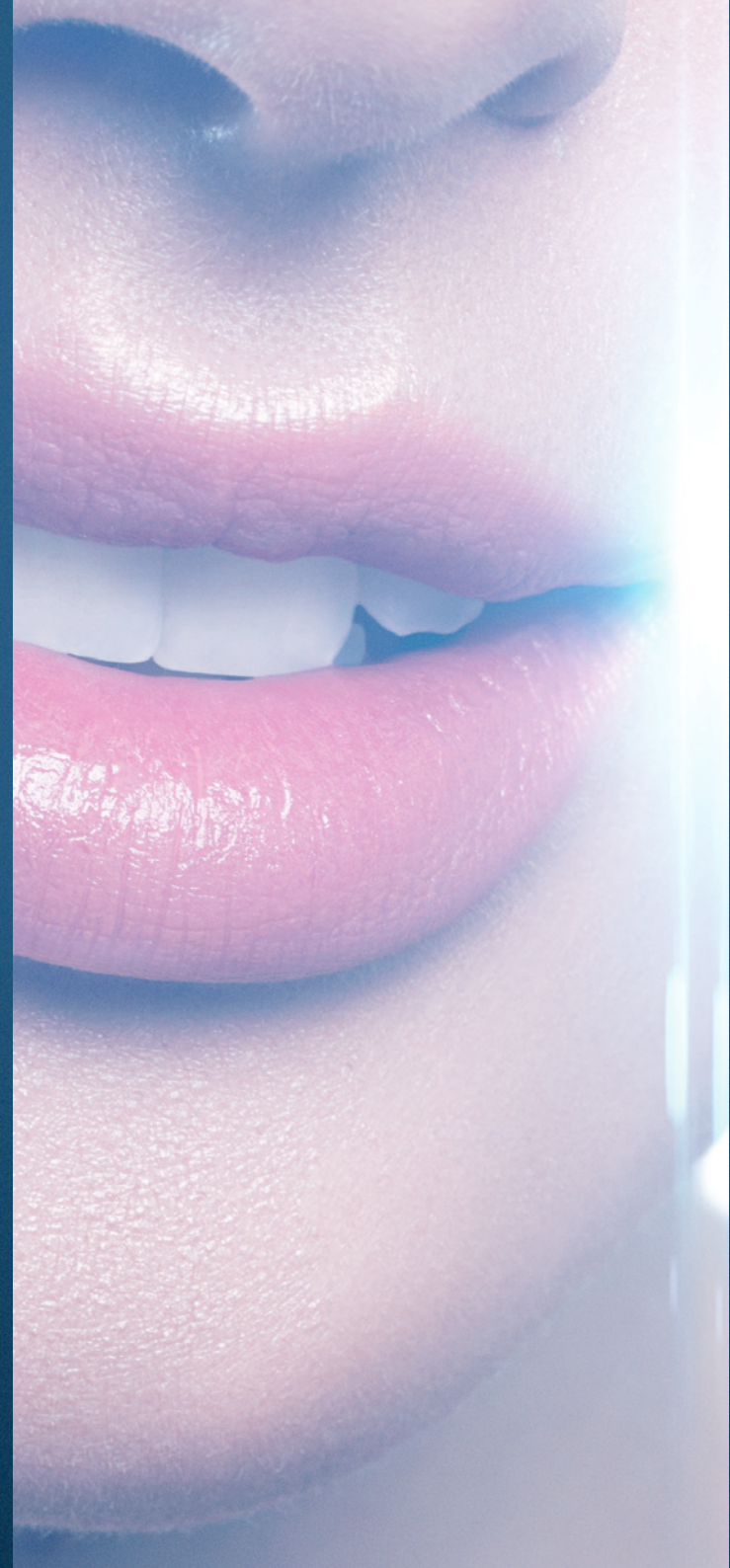




DIGITAL CONTROLS WITH A NEW AND EXCLUSIVE CONCEPT.
A MIX OF INCOMPARABLE INNOVATION AND SIMPLICITY,
READY TO BE DISCOVERED, HEARD AND TOUCHED.

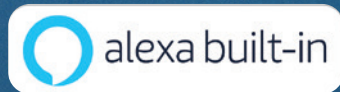
THE VOICE OF HOME AUTOMATION

LIVING 
now



VOICE CONTROL

ALEXA DIRECTLY ON THE WALL
INTEGRATED WITH
HOME CONTROLS.
INNOVATIVE PRODUCT AWARDED
AT THE CES OF LAS VEGAS.



ALEXA IS BY YOUR SIDE
JUST HAVING THIS DEVICE
IN EACH ROOM



VOICE ASSISTANTS

LIGHT CONTROL



YOU ASK, ALEXA ANSWERS

Control home automation through your voice: lights, rolling shutters, burglar alarm, favourite music and temperature, or ask for any information.



*Alexa, what will
the weather be like
tomorrow?*

*"Alexa, welcome
me home!"*



Note: setting up a routine is required to perform this action". With the "Welcome me home" routine, it is possible to activate lights, rolling shutters and music and set the ideal temperature.

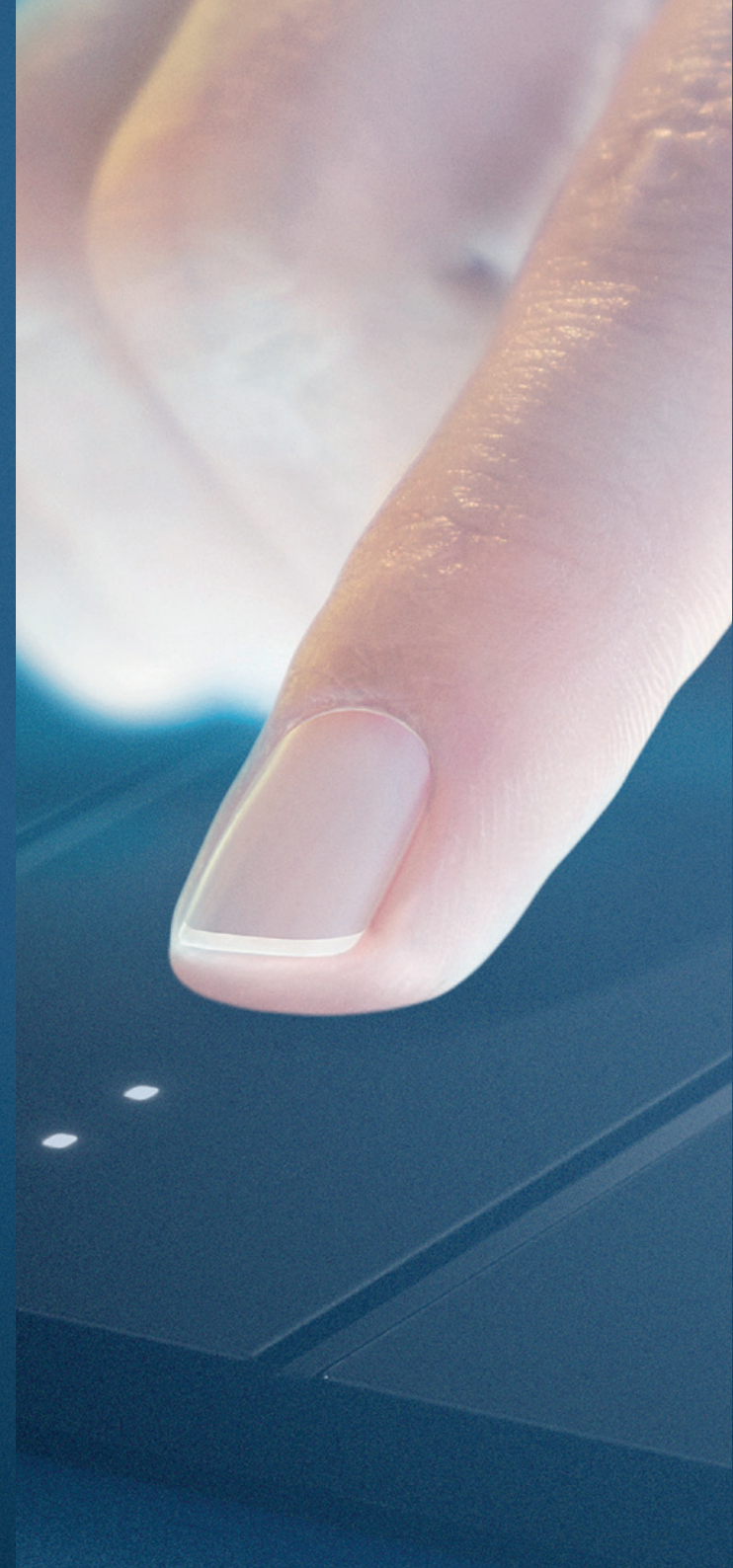
*“Alexa, at what point
is the cake timer?”*

MyHOME_Up system can be managed with the voice also with the Amazon Alexa and Google Home voice assistants.



A NEW WAY
TO TOUCH
HOME AUTOMATION

LIVING 
now



DIGITAL CONTROLS. A MULTISENSORIAL EXPERIENCE.

NEW TOUCH CONTROL
WITHOUT COVER PLATE

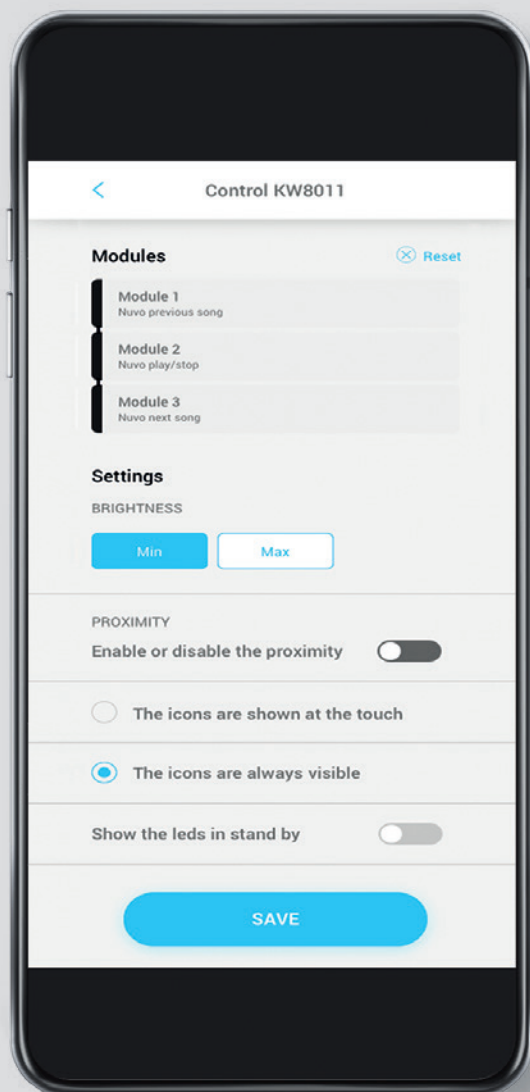
CUSTOMISED ICONS AND LEDS
USING AN APP

EXPANDABLE TO NEW
FUNCTIONS



LIGHT CONTROL

FULL CONTROL



END USER APP

CREATE CUSTOMISABLE FUNCTIONS

The function associated to the control device and the corresponding icon can be changed at any moment, also by the end user, using simply an app.

FUNCTION MODIFICATION



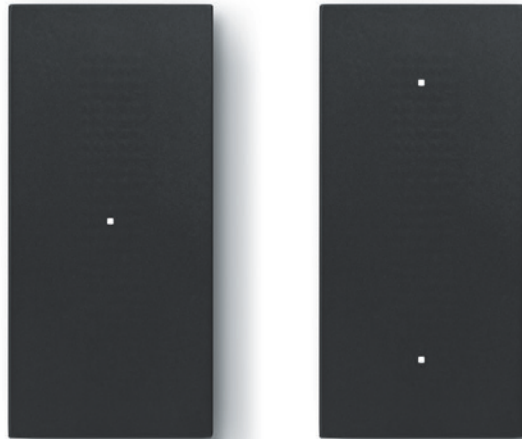
FROM DIMMER
CONTROL



TO SHUTTER
CONTROL

LIGHT CONTROL

TO MANAGE THE LIGHTING
(1 OR 2 LIGHTS, GROUP AND GENERAL)



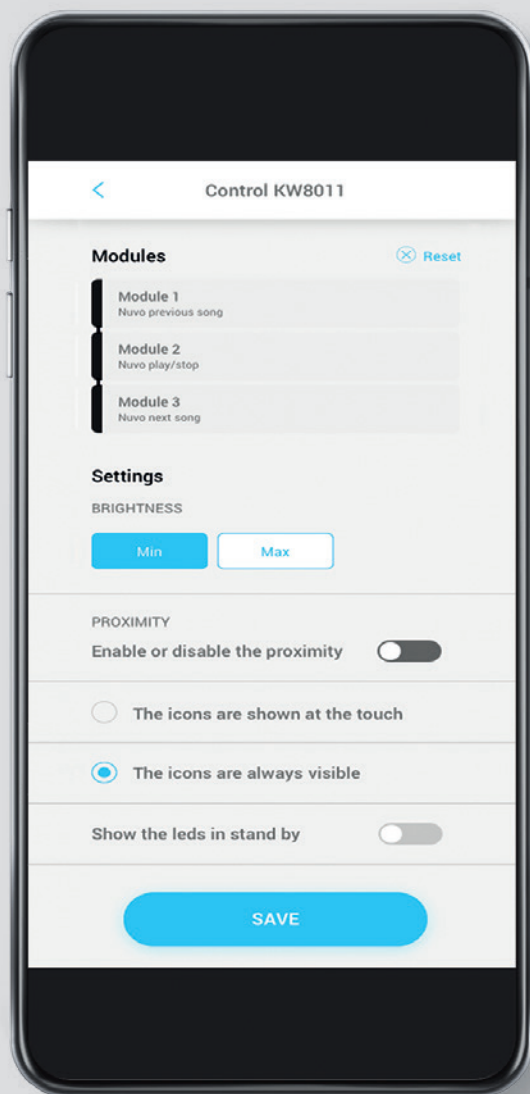
CREATE CHOOSE BETWEEN FULL AND LIGHT CONTROLS

Digital controls for every need.
Two versions, endless customisation
to be adapted to life style.

FULL CONTROL

FROM 1 TO 3 LIGHT, DIMMER, ROLLING SHUTTER, NUVO AUDIO, LOAD CONTROL, SCENARIO, COLOURED LIGHT FUNCTIONS.



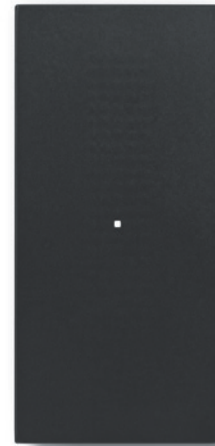


END USER APP

EXTEND THE FUNCTIONS

Expand the system by adding new functions associated to the control device, using simply an app.

FUNCTION EXTENSION



FROM THE
CONTROL OF
ONE LIGHT



TO THE
CONTROL OF
TWO LIGHTS

LIVING 
now



FROM THE
LIVING ROOM



MOVE THE POSITION

With a simple operation,
it is possible to change the
position of a control device,
maintaining its function.
Without wiring.



TO THE BEDROOM

LIVING NOW AND **MyHOME_Up**. HOME AUTOMATION



USING THE VOICE COMMANDS, IT IS NOW POSSIBLE
TO MANAGE WITH YOUR VOICE
LIGHT, ROLLING SHUTTER, BURGLAR ALARM,
TEMPERATURE AND MUSIC SCENARIOS.





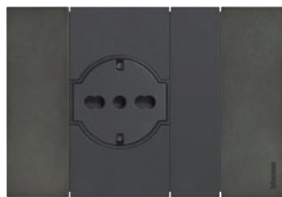
VOICE CONTROL



DIGITAL CONTROL



TEMPERATURE CONTROL



CONTROLLED SOCKET



TOUCH SCREEN HOMETOUCH



MULTI-ROOM AUDIO SOUND SYSTEM

CONTROL ALL **MyHOME_Up**
AND THIRD PARTY FUNCTIONS
AS YOU WISH.



VOICE
COMMAND

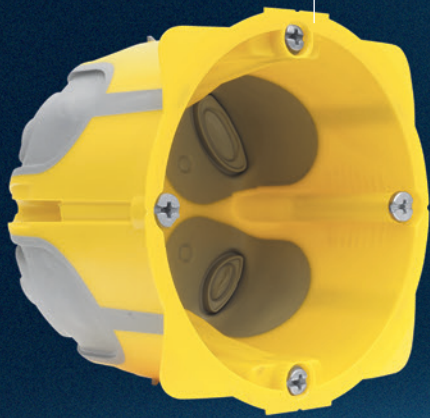


CONTROL WITH
SMARTPHONE

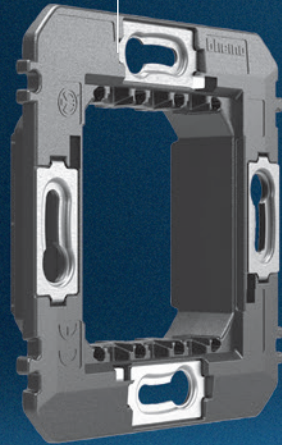


TOUCH
CONTROL

ROUND BOX



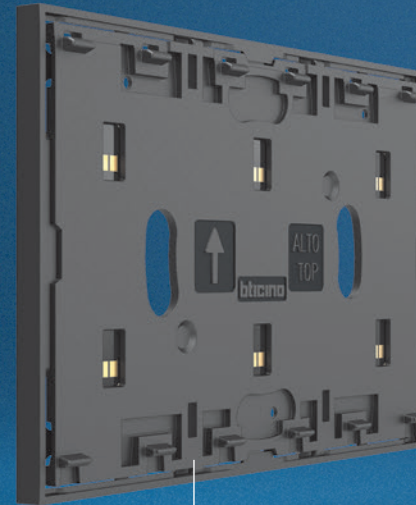
SUPPORT
K8102



CONNECTION
MODULE K8001



ON/OFF ACTUATOR
FOR LIGHT K8002L

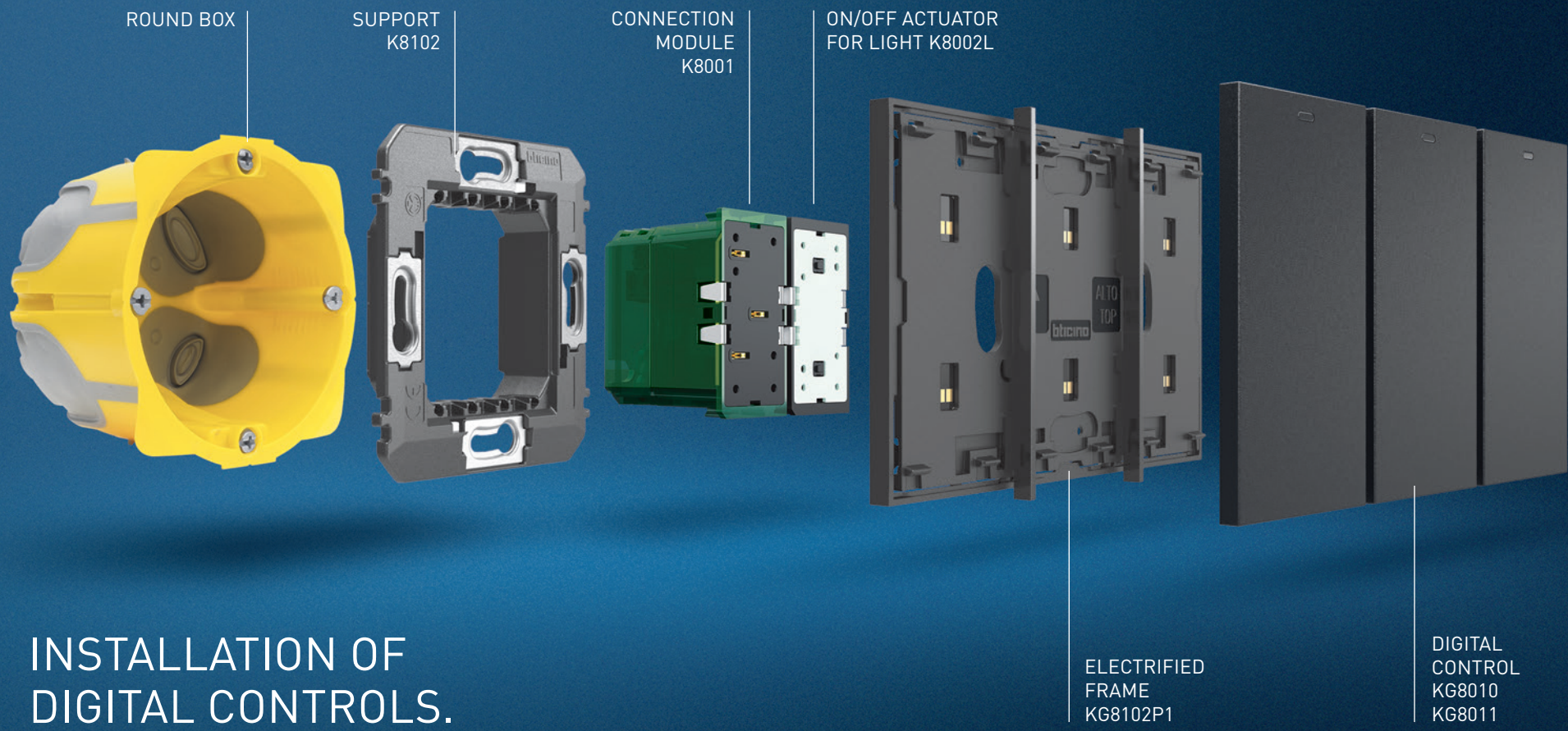


ELECTRIFIED
FRAME
KG8102P1



VOICE
CONTROL
KG8013

INSTALLATION OF
VOICE CONTROL.



INSTALLATION OF DIGITAL CONTROLS.

CATALOGUE



KG8013

K8003

KM8010

KW8011

K8002L
K8002s

K8001



Item

Voice control

- KW8013
- KG8013
- KM8013



Amazon Alexa digital control device with voice assistant, including two touch controls for lighting management. 27 Vd.c. power supply from BUS through connection module item K8001 or additional power supply unit, item K8003 - 3 modules

- K8003

Power supply



Connection module with additional power supply dedicated to Voice control Alexa built-in item KW/KG/KM8013 - 2 modules

- KW8010
- KG8010
- KM8010

Light control



Touch control for the management of ON/OFF light functions. One single control can manage from 1 to 2 functions between single lights, light groups or general lights. - 1 module

- KW8011
- KG8011
- KM8011

Full control



Touch control for the management from 1 to 3 functions between: lights on/off, load control, dimmer, shutters up/down with or without preset, NUVO Player and scenarios. It can also be used as group or general control. It has on-board proximity sensor that allows the display of function icons/symbols when approaching the control - 1 module

Item

ON/OFF actuators for lights and for shutters

- K8002L



Flush-mounted actuator with 2 independent and neutral relays for "zero crossing" function- single or double 230 V~ loads - 1 module

- K8002S



Flush-mounted shutter actuator with 2 independent relays. It allows the management of a specific shutter position. Through the control KW/KG/KM8011, together with the UP/DOWN function monostable and bistable, the actuator also places the shutter in a stored (PRESET) position - 1 module

- K8001

Connection modules



Device for the power supply of controls and actuators through electrified frame item KW/KG/KM8102P1.



K8102



KG8102P1

Item

- KW8102P1
- KG8102P1
- KM8102P1


Electrified frame

Electrified frame with intermediate control separators (removable).
For the installation of up to 3 digital controls or covers, item KW/KG/KM8100 in 2-module box with support K8102

- KW8100
- KG8100
- KM8100


Blanking module

Cover for blanking module art. K4950
- 1 module

- K8102


2-module

Support for the installation of the electrified frame
item KW/KG/KM8102P1 in 2 module box.



bticino

BTicino SpA
Viale Borri, 231
21100 Varese - Italy
www.bticino.com

bticino

A Group brand |  **legrand**

AD-EXL.NW_2/DG20B - Version 10/2020