



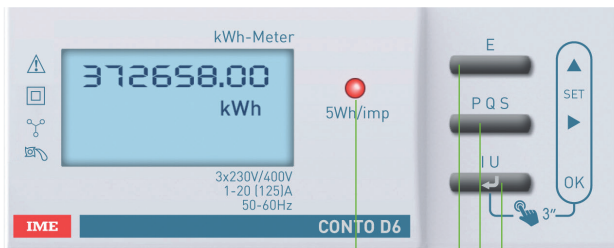
CONTO D6-Pd

Static meter for direct connection up to 125 A

MAIN CHARACTERISTICS

- *DIRECT CONNECTION UP TO 125A IN ONLY 6 MODULES*
- *NEW DESIGN*
- *NEW INTERFACE FOR DATA ACCESS, SIMPLE AND FAST*
- *NEW BACKLIGHT DISPLAY*
- *RS485 MODBUS COMMUNICATION INTEGRATED*
- *PULSE OUTPUT*

COMMANDS



- Metering LED
- Energy values access
- Power values access
- Electrical values and settings access

DISPLAY

- Total/partial Active Energy
- Active Energy tariff 1 and 2
- Total/partial Reactive Energy
- Reactive Energy tariff 1 and 2
- Voltage - Frequency
- Power Factor
- Working hours and minutes
- Istantaneous current
- Istantaneous Power average/max

CHARACTERISTICS

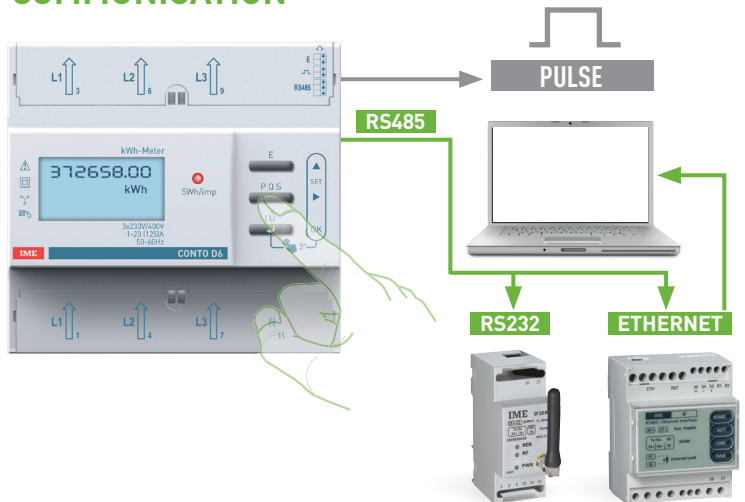
- Three-phase network, 4-wire
- Direct connection
- Programmable pulse output
- RS485 communication
- Sealable terminals block
- External interfaces**
- Ethernet communication
- RS232 communication

PARAMETERS MEASURE



Active energy

COMMUNICATION



CONTTO D6

Cat. Nos.	Network	Output	In (A)	Vn (Va.c.)
CE6DT1252	3Ph+N	Pulse output	125	230÷415
CE6DT1256		Pulse output + RS485 ModBus		

IME

Via Travaglia, 7 • 20094 Corsico (MI)
Tel. +39 02 44 878.1 • Fax +39 02 45 03 448
info@imeitaly.com • www.imeitaly.com

AD-EX/IME17L1/EN - Version 06/2017